

NC Department of Health and Human Services

NC Home Care Aide Curriculum

Module 17 – Alzheimer’s Disease and Other Types of Dementias

July 2021

*CREATED IN CONSULTATION WITH HEATHER MCKAY, MS, OR/L
DEMENTIA CARE SPECIALIST*

OBJECTIVES (1)

- 1. Discriminate among the terms, dementia, Alzheimer's disease, forgetfulness, delirium, and depression.**
- 2. Describe symptoms that commonly occur with Alzheimer's disease/dementia based on brain damage.**
- 3. Recognize behaviors that are indicative of dementia.**
- 4. Differentiate among 5 levels of ability and loss in people with dementia based on observable behaviors, language, and actions.**

OBJECTIVES (2)

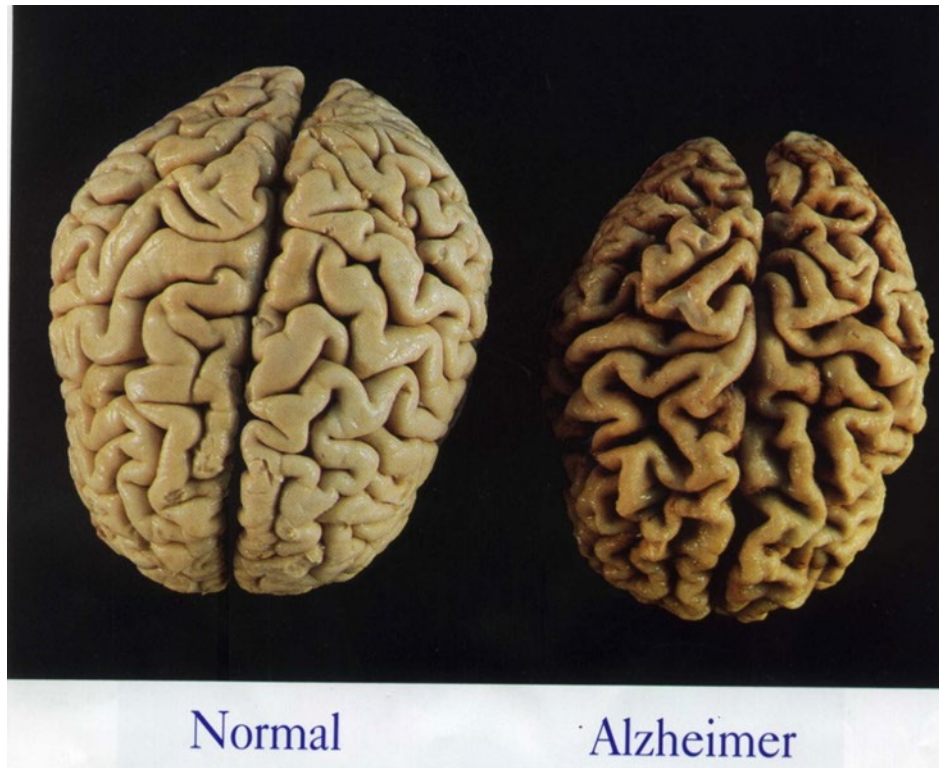
- 5. Demonstrate key components of a positive physical approach when working with a patient with dementia.**
- 6. Demonstrate a combination of cues, visual, verbal, and tactile, to assist a patient with dementia.**

WHAT IS DEMENTIA?



Handout #1

Brain Images



A Category of Diseases

- **Dementia is a category of diseases**
- **There are many types of dementia underneath the same umbrella**
- **Alzheimer's disease is one type under the umbrella, but there are more than 70 types of dementia**
- **Alzheimer's disease is the most common type of dementia**

LEWY BODY DEMENTIA



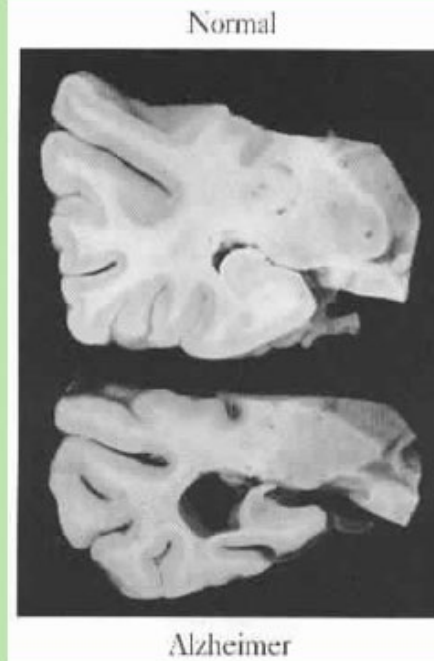
ACTIVITY #1

24-HOUR CARE DISCUSSION

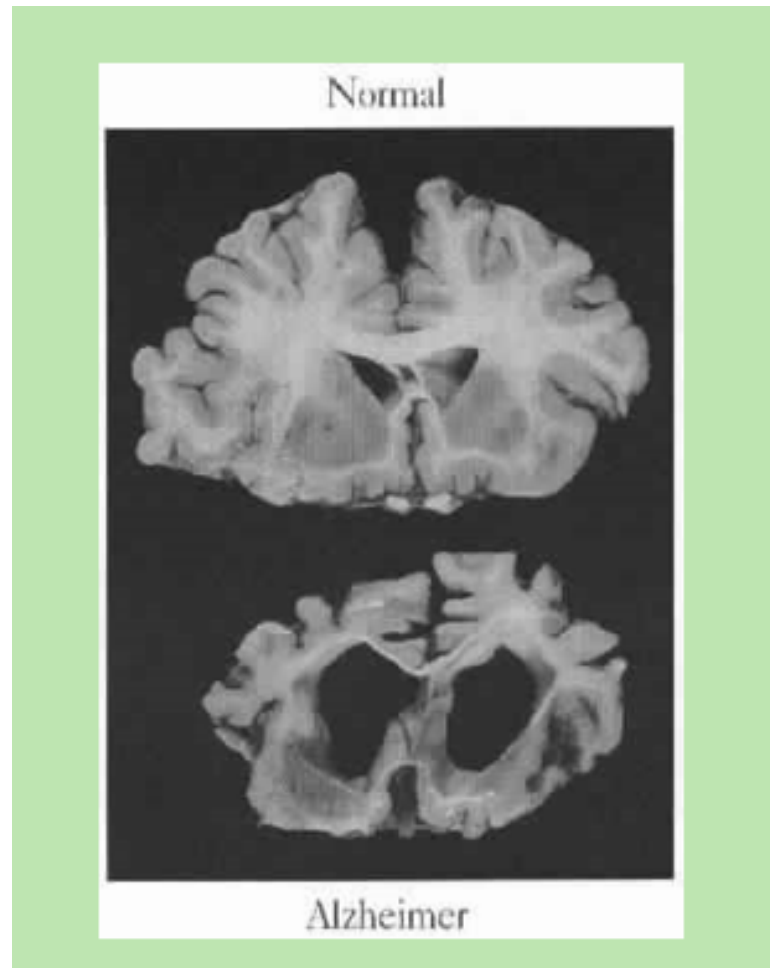


Memory/Hippocampus

- Memory/Hippocampus



LANGUAGE

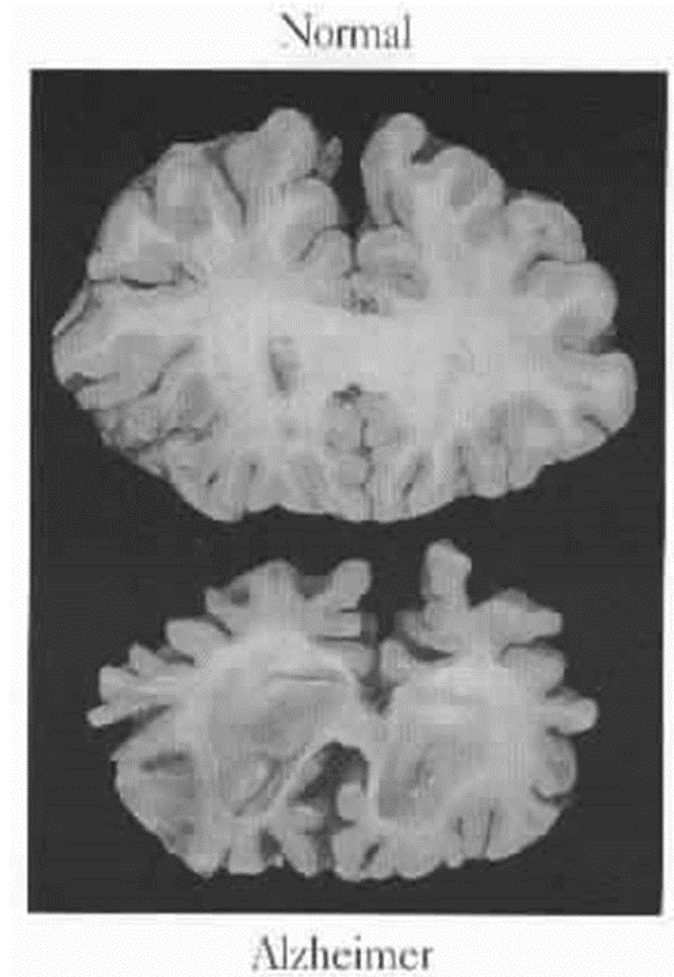


FORMING LANGUAGE/SPEAKING

- Making language
- What language files are preserved?

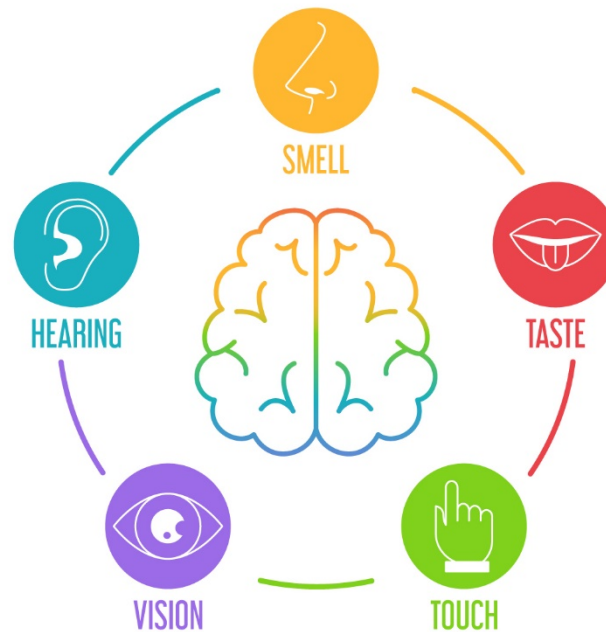


IMPULSE CONTROL



Sensory Processing/Motor Control

- **Sensory input comes through all the senses of the body**



Techniques for Approaching a Patient



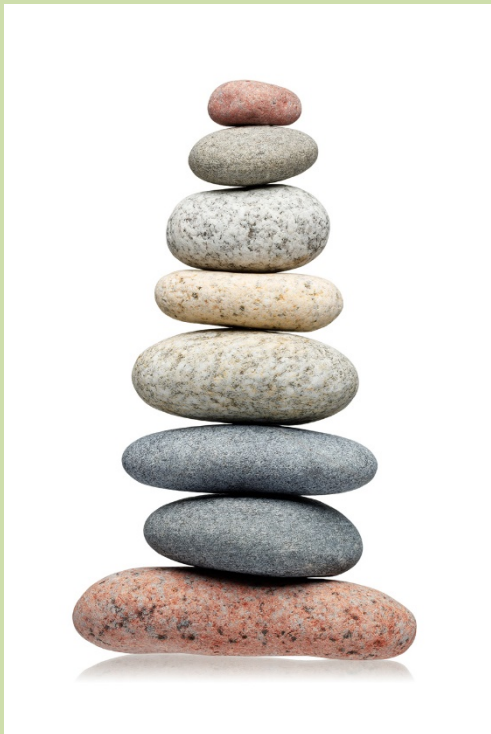
ACTIVITY #2

Physical Approach Skills



Patient Changes Over Time

A patient with Alzheimer's disease will follow the steps in order



A patient with Vascular Dementia will present a combination of skills at different levels



Dementia is Progressive

- **Every type of dementia will progress.**
- **There is no cure, so change is guaranteed.**
- **As the disease progresses, the patient's abilities, interests, and skills will change as damage to the brain spreads.**
- **By recognizing these changes and offering matching support, the patient will maintain function as long as possible.**

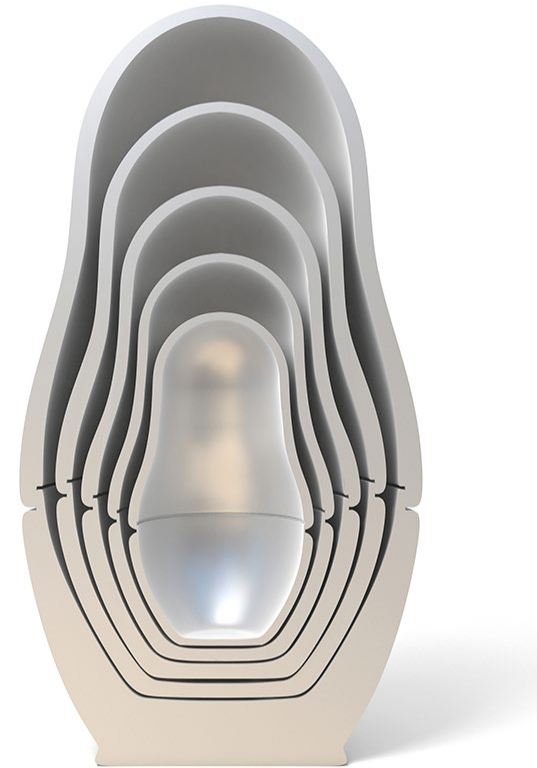
Describing the Progression of Dementia (1)

- Early, Middle, Late System
- Global Deterioration Scale



Describing the Progression of Dementia (2)

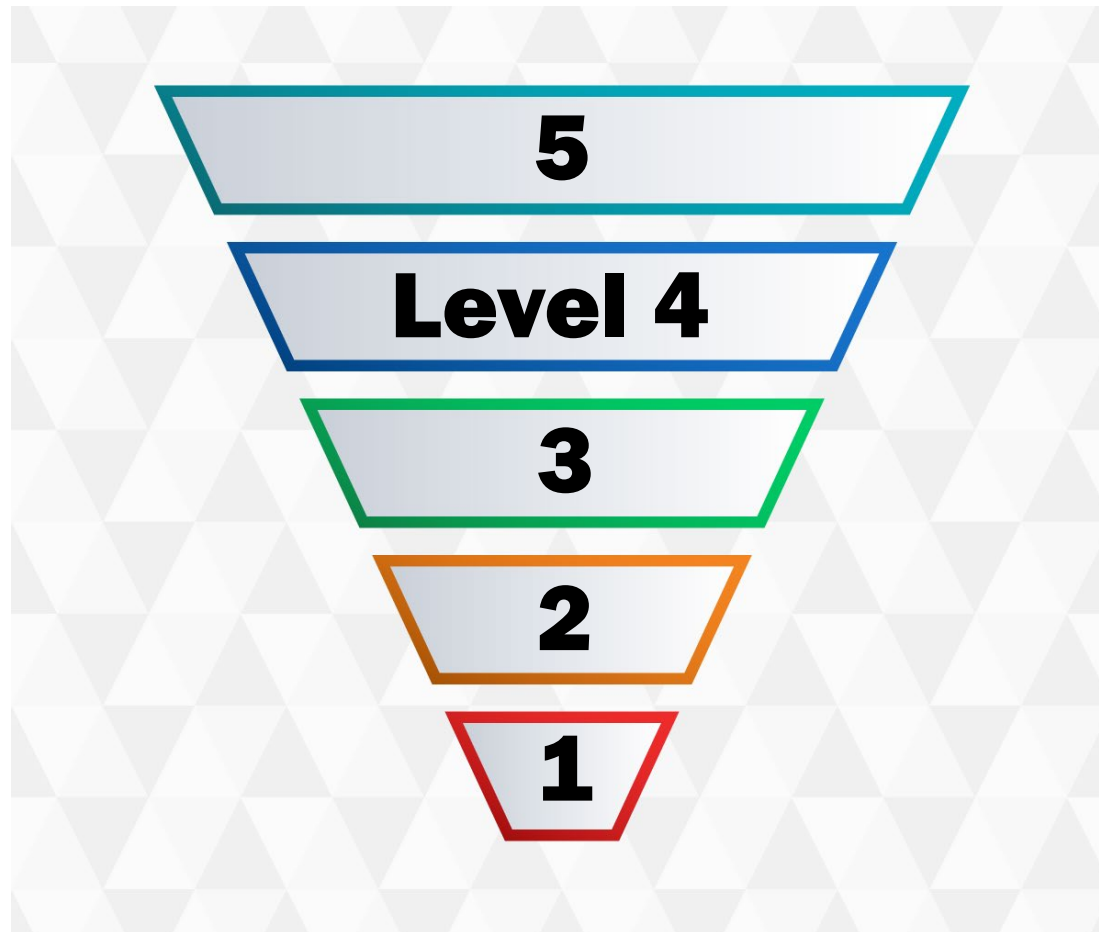
- **Cognitive Disabilities Scale**
 - **It recognizes 5 levels of progression of the disease**
 - **Function levels range from slightly impaired (level 5) to end-of-life (level 1)**



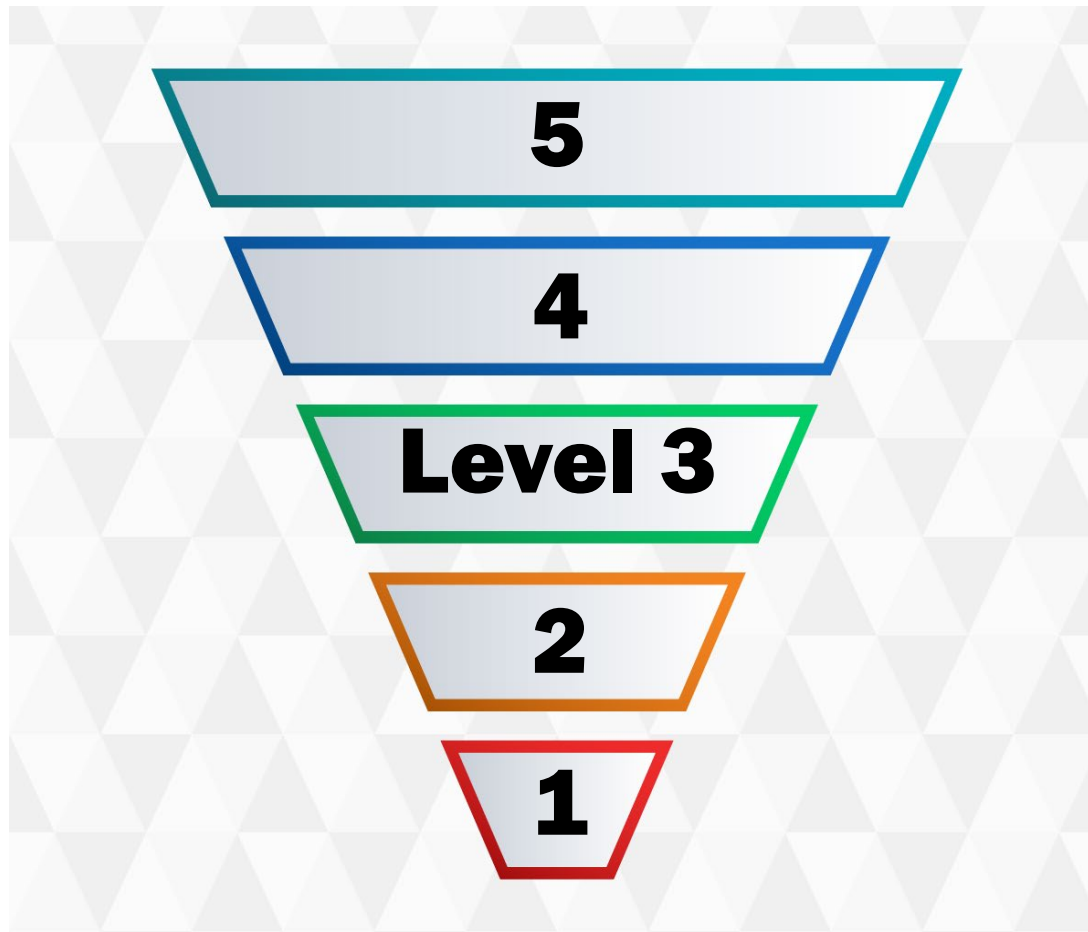
Cognitive Disabilities Scale – Level 5



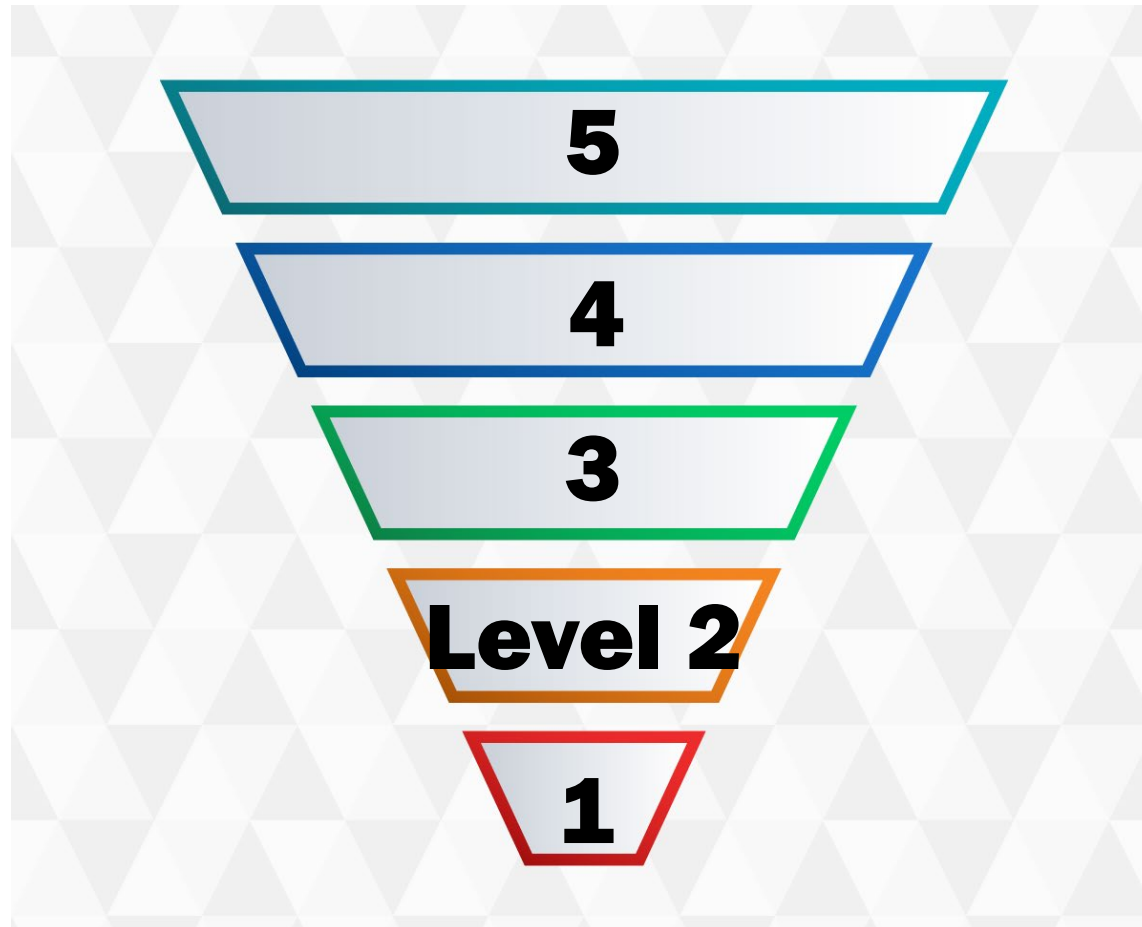
Cognitive Disabilities Scale – Level 4



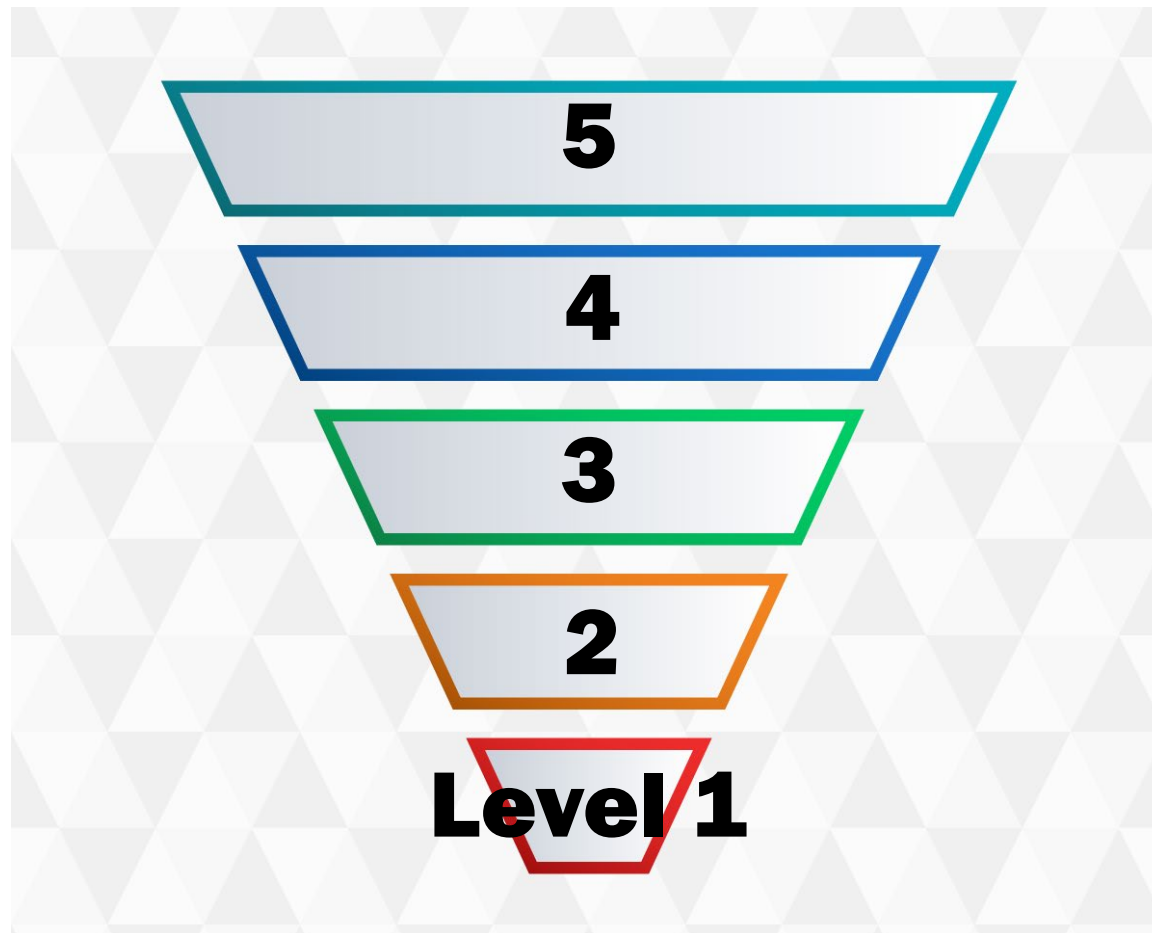
Cognitive Disabilities Scale – Level 3



Cognitive Disabilities Scale – Level 2



Cognitive Disabilities Scale – Level 1





- **This module is designed to help you understand why the patient with dementia behaves the way he/she does, how you can help, and how the disease affects the patient and his/her caregivers.**
- **Remember, the patient is doing the best they can with a brain that is changing. As a home care aide, you can provide the best care for the patient throughout the disease with new knowledge and techniques that work!**